

## TECH TIP: Infilink Gauge Setup with ActiveX Controls

Included with Infilink HMI software are dozens of IOComp ActiveX controls, such as gauges, buttons, lamps, data displays, and more. The following setup instructions for a gauge demonstrates how you can quickly configure an object in Infilink.

1. In Design Mode, click Tools/Load ActiveX Controls. Scroll down to controls that begin with "i" and select the iAngularXGauge. You should now see the following icon on the toolbar located at the top of the screen.



2. Click the icon and draw a rectangle on the screen to outline the gauge.
3. Right click the border of the rectangle and select ActiveX Control Properties.

4. Click the tabs Control/Design/Arc Hub. Enter the range and start data, then click Apply to see the gauge, as shown in Figure 1.
5. Next attach the gauge to a KEPServerEX tag. In this example we have selected a tag in the KEPServerEX SimDemo project. Click OPC / Add / Position. Browse to select KEPServerEX as the OPC Server, and a tag. See Figure 2
6. Save and run the project to see your gauge as shown in Figure 3.

Explore the other settings available on the gauge. Notice that you can change the number of major and minor ticks, hub and needle color, the starting and ending range, and many more attributes. Also note that every parameter is accessible to OPC, so that they can all be changed by any OPC Server.

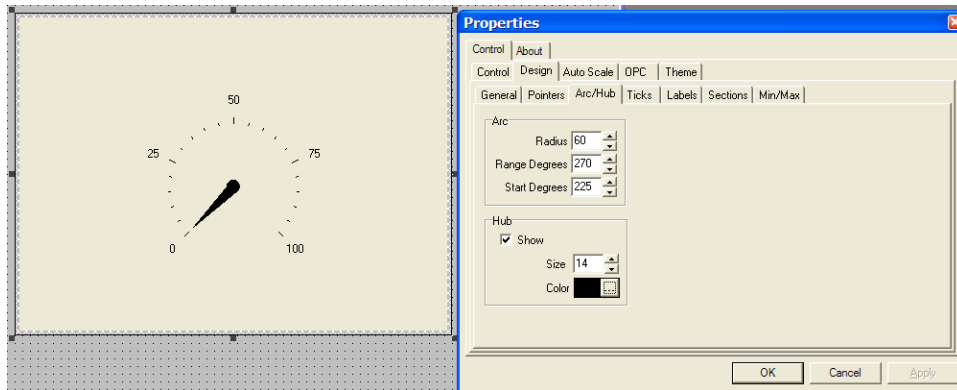


Figure 1

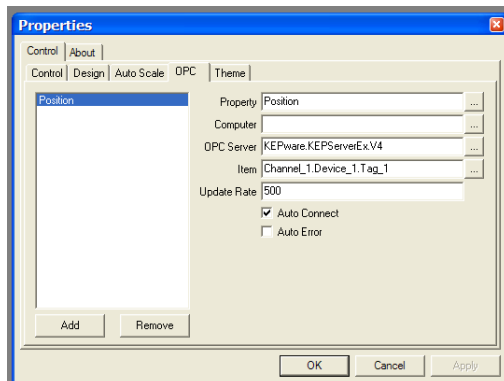


Figure 2

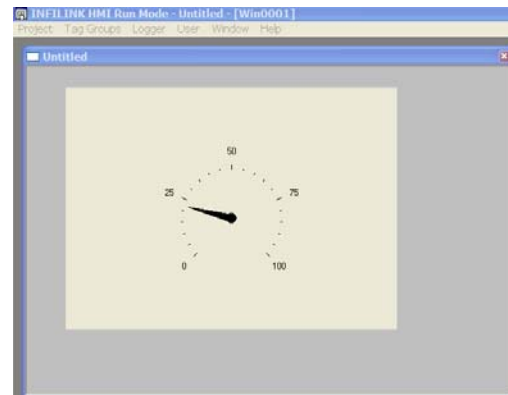


Figure 3